

# ASSEMBLY INSTRUCTION

## WOOD VICE

for KUBE4W+5W 1150 x 1150 + 1500x1500 4 Student Workbench

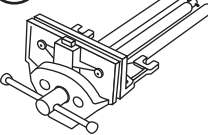
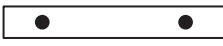
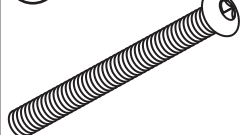




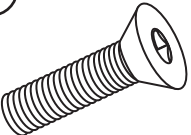




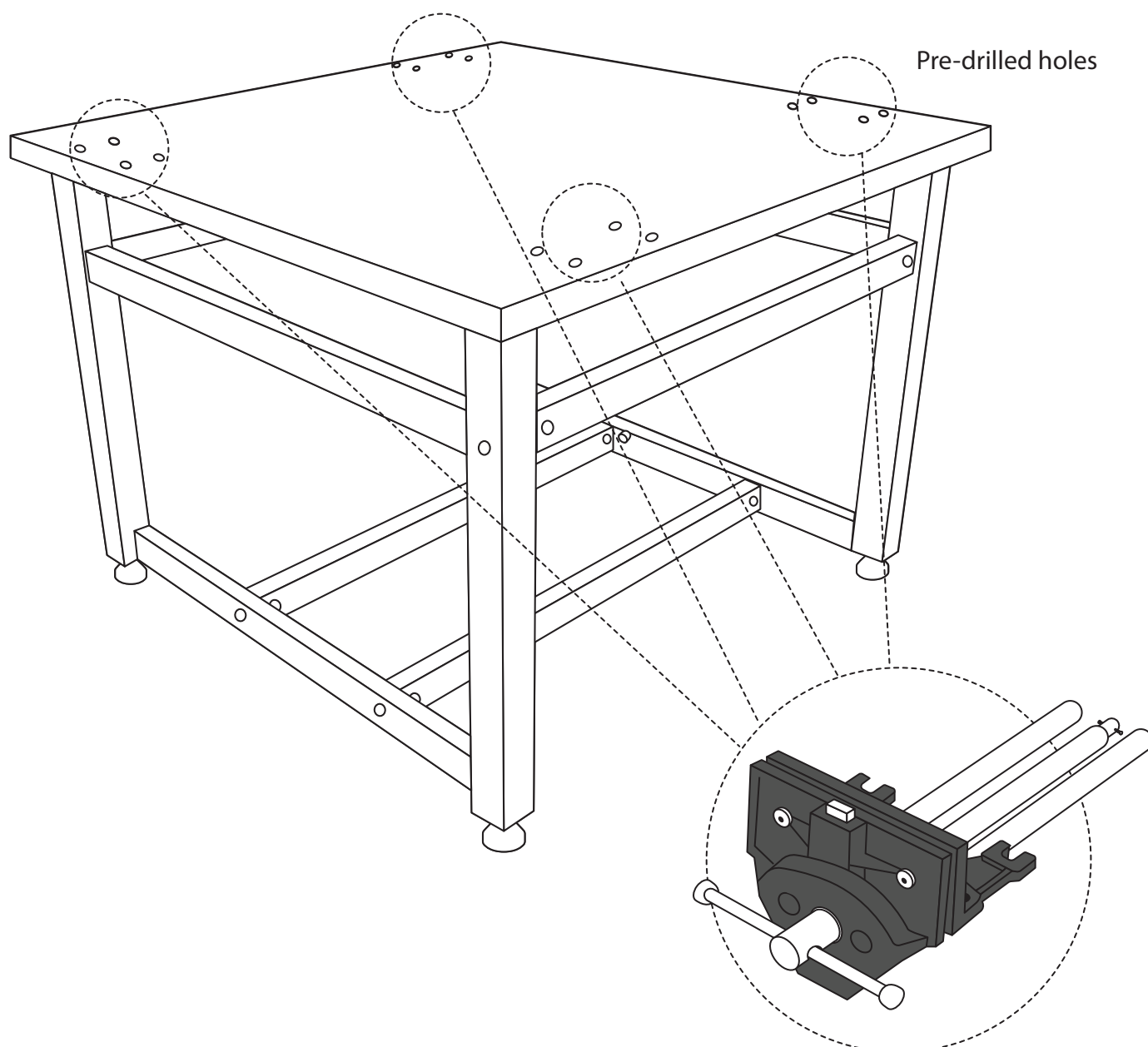
WOODWORK



2 PEOPLE  
RECOMMENDED

### PARTS LIST

<p>1 4 PCS</p>  <p>WOOD VICE</p>	<p>2 8 PCS</p>  <p>VICE BLOCK 200 x 35 x 35</p>	<p>3 16 PCS</p>  <p>BUTTON HEAD SCREW M10 x 100</p>	<p>4 32 PCS</p>  <p>M10 WASHER</p>	<p>5 4 PCS</p>  <p>FRONT VICE JAW</p>	<p>6 4 PCS</p>  <p>BACK VICE JAW</p>
<p>7 16 PCS</p>  <p>M10 NYLOC NUT FOR BOLT</p>	<p>8 8 PCS</p>  <p>CSK SCREW M6 x 35 FOR FRONT VICE JAW</p>	<p>9 8 PCS</p>  <p>M6 NYLOC NUT FOR FRONT VICE JAW</p>	<p>10 8 PCS</p>  <p>6G x 45 SCREW FOR REAR VICE JAW</p>		

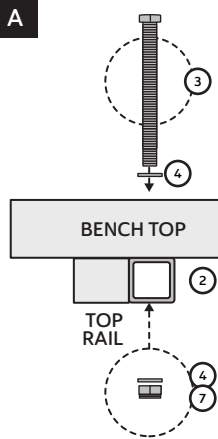


## STEP 1

PARTS 1 2 3 4 7

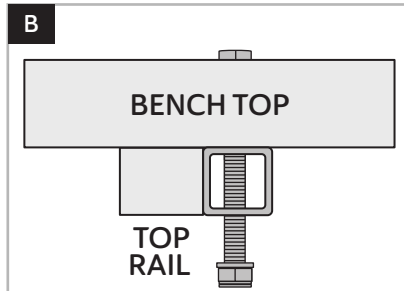
### Fix the Vice to the Bench

A

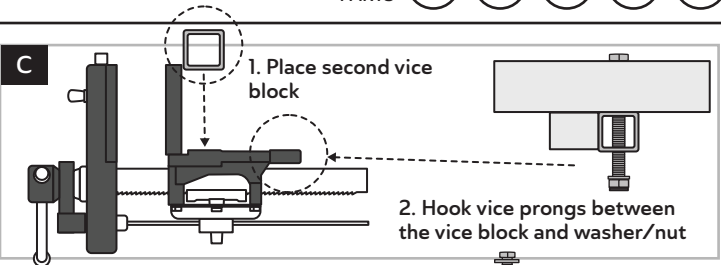


A. Insert 2x M10 bolts (3) through the back vice holes into the metal vice block (2).  
B. Loosely tighten bolts.

B

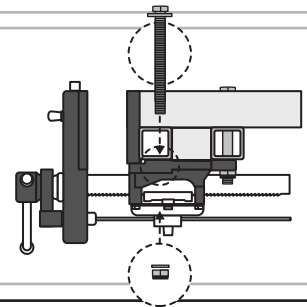


C



D

D. Insert 2x M10 bolts through the front vice holes into the vice block.  
⚠ Tighten back bolts first.



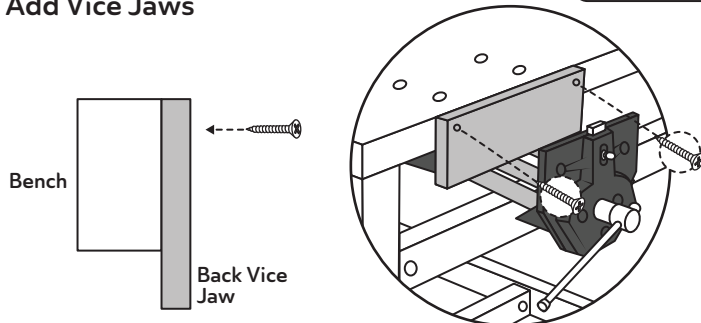
### PRO TIP

Ensure vice is flush with the top of the bench.

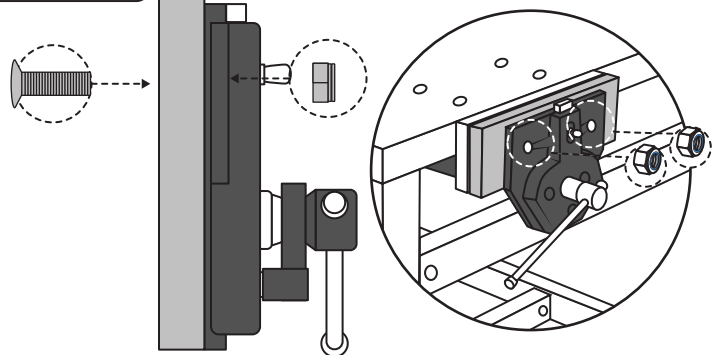
## STEP 2

PARTS 5 6 8 9 10

### Add Vice Jaws



Screw on the back Jaw using the Chipboard screws. Ensure it is flush with the top of the bench and is in the center of the vice.



Screw the front jaw to the vice using the countersink screws and the nyloc nuts

## STEP 3

Repeat for the other 3 vices

