



## SCM Minimax S41EliteX Thicknessing Machine



*is more*

# ABOUT US

Scm Group is industry leader for the production of industrial woodworking machinery, as well as for machinery that processes advanced materials, with brands specialising in specific technologies, present across 5 continents for over 65 years.

**65** years history

**3** main production sites in Italy

**300.000** square metres of production space

**17.000** machines manufactured per year

**90%** export

**20** foreign branches

**350** agents and dealers

**500** support technicians

**500** registered patents

## THE MOST IMPRESSIVE DISTRIBUTION NETWORK IN THE WORLD



# THICKNESSING PLANER

## SCM – Minimax S41ELITESX



MADE IN ITALY



**95 MM PLANER Spiral CUTTER BLOCK WITH: PERFECT FINISHING WITH THE MINIMUM EFFORT**



**THICKENING TABLE WITH LIFTING ON 4 SPINDLES WITH TRAPEZOIDAL THREADS : STABILITY OVERTIME**

Technical features		s 41es
- useful working width	[mm]	410
- cutter block diameter (mm)		95
- max. stock removal	[mm]	5
- thickening table dimensions	[mm]	410 x 775
- feed speed on thickener	[m/min]	6/12
- min. ÷ max. working height on thickener	[mm]	3 ÷ 240
- min. working length on thickener	[mm]	180
<u>Other technical features:</u>		
- three-phase motors		5kW (6,6hp) 50Hz
- Single-phase motors		Optional Indent Machine from Italy
- exhaust outlets diameter	[mm]	120

### **STANDARD EQUIPMENT:**

- Helicoidal thickener infeed roller
- Sandblasted steel thickener outfeed roller

- 95 mm planer spiral cutter block with: perfect finishing with the minimum effort.

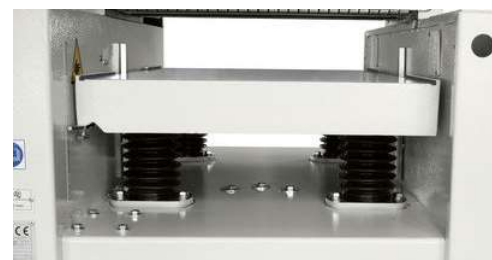
### **Perfect finish**

An optimal planing with minimal effort, thanks to the 95 mm diameter spiral cutter block. For an impeccable finish the pressure of the thickener feed rollers can be adjusted according to the type of wood machined. The roller infeed has a helicoidal profile to guarantee firm and constant work piece feed, while the outfeed roller in sandblasted steel maintains the perfect post-processing finishing.



### **Stability over time**

For a maximum long lasting stability the cast iron thickening table lifts on 4 spindles with trapezoidal threads dust protected.



- **Mechanical Digital readouts (1/10 mm) for thickening table height**



**10.40.00 Ce norms**

**R0.21.81 minimax s 41es CE version**

Thicknessing planer with devices in conformity with European safety regulations and complete with:

- self-braking motor

**93.07.72 Voltage 400 EU**

**93.12.05 Frequency 50 hz**



**58.04.93 "Xylent" spiralknife cutterblock with 3 series of knives**

complete with:

- 66 blades 15x15x2,5mm with 4 selflocking and self centering screw knives
- 1 dynamometric torque key for the correct tensioning and safe use when locking the blades
- 2 inserts for the dynamometric key



**"Xylent" spiralknife cutter block with 3 rows of knives**  
**The 3 rows of spiral knives give an exceptional finish. Reduced noise during machining provides a more comfortable working environment. It also improves the dust extraction due to the production of very small chips. Each cutter has 4 tips which can be rotated into the cutting position when worn. Therefore increasing the production life of the cutter block before knives require replacement**

**58.02.22 Rubber-coated feed roller on thicknesser outfeed**

- Enables better grip to outfeed smooth finished products



## Options available upon request

### 88.80.63 Xylent Maintenance Kit

Case complete with:

- 1 Cleaning / degreasing liquid bottle for cleaning
- 1 dynamometric key set to 5.7Nm
- 2 bit Torx T20 driver bits
- 10 cutter blade inserts 15x15x2.5mm
- 5 spare screws M6x15T20
- 1 Brass Bristle Brush to clean the cutterblock with cutters in.
- 1 Steel Bristle Brush to CleanCutter Insert housings.





# SERVICE E SPARE PARTS



A CONTINUOUS COMMITMENT, TO PROTECT YOUR INVESTMENT

## SERVICE

SCM provides a service that goes beyond the purchase, to guarantee the long term performance of your technological production system and peace of mind for your business.

### A COMPLETE RANGE OF AFTER-SALES SERVICES

- installation and start-up of machines, cells, lines and systems
- tailored training programs
- telephone support to reduce times and costs when machines are not working
- preventive maintenance programs to guarantee long term performance
- complete renovation of machines and plants to renew the added value of the investments
- custom upgrading to update machines and plants and meet new production requirements.

## SPARE PARTS

SCM can count on 140 spare parts professionals worldwide to meet any request with real time shipments.



36.000 spare parts: our spare parts inventory, with a value of 12 million euros, covers every single machine.



Spare parts guaranteed: we guarantee also hard to find parts, with 3,5 million euros invested in "critical" spare parts.



Immediate availability: over 90% of orders received are carried out the same day thanks to the huge inventory available.



6 branches around the world: The spare parts service can count on worldwide support (Rimini, Singapore, Shenzhen, Moscow, Atlanta, Sao Bento do Sul).



500 shipments a day

